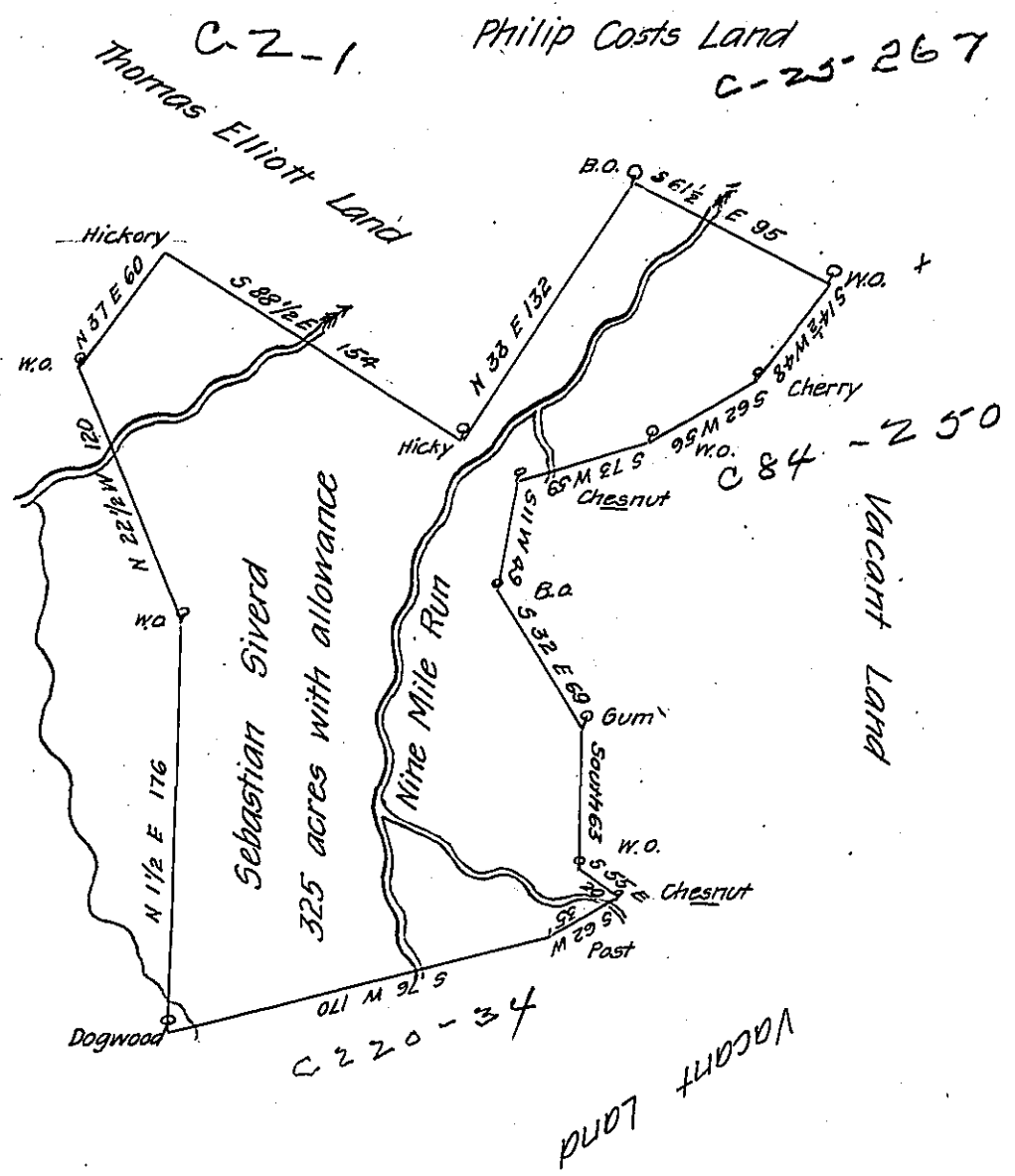


FORM NO. 1.



January 19th 1785.

Sebastian Siverd

Surveyed the above described Tract of Land Situate on the
 Nine Mile Run in Mountpleasant Township Westmoreland County
 Containing three hundred & twenty five acres with the Allow-
 ance of Six p^c Cent. In Pursuance of a Warrant dated 15th
 November 1784

To John Lukens Esq^r
 Surveyor General.

Benj^m Lodge D. Surv^r

IN TESTIMONY that the above is a copy of the original remaining on file in
 the Department of Internal Affairs of Pennsylvania, made
 conformably to an Act of Assembly approved the 16th day of
 February, 1833, I have hereunto set my Hand and caused
 the Seal of said Department to be affixed at Harrisburg,
 this twelfth day of December 1906

George D. Brown
 Secretary of Internal Affairs.